

TCC  
colleague file

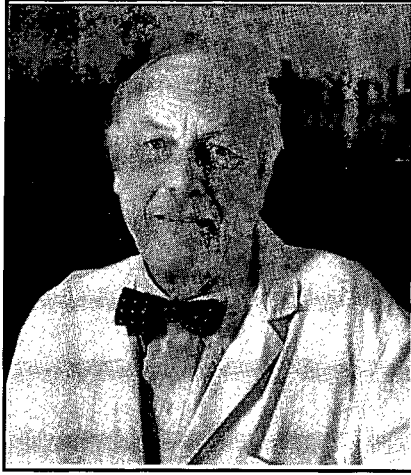
Memorial Service for

Thomas C. Chalmers, M.D.

*Friday, January 5, 1996*  
*4 p.m.*

Arthur M. Sackler Center for Health Communications  
145 Harrison Avenue, Boston





Thomas C. Chalmers, M.D.

Adjunct Professor of Medicine  
Department of Medicine,  
Tufts University School of Medicine

Dean and President Emeritus  
Mount Sinai School of Medicine

Remembrances can be made to ~~Trustees of Tufts University~~ and mailed to:

Donations to the Thomas C. Chalmers, M.D., Excellence Award, Fund  
c/o Administration, Department of Epidemiology and Preventive Medicine  
University of Maryland at Baltimore  
660 West Redwood Street  
Baltimore, MD 21201

or the

Thomas C. Chalmers Student Scholarship Award  
c/o Society for Clinical Trials, Inc.  
600 Wyndhurst Avenue  
Baltimore, MD 21210

## *Tributes to Dr. Chalmers*

### *Introductory Remarks*

**Harry Selker, MD, MSPH**, Division of Clinical Care Research,  
New England Medical Center

**Morton Madoff, MD, MPH**, Tufts University School of Medicine

**Chip Harkness, Fletcher, Harkness, Cohen, and Moneyhun**

**Norman Grace, MD**, Tufts University School of Medicine, Faulkner Hospital

**George Grady, MD**, Massachusetts Department of Public Health

1954-68

**Belton Burrows, MD**, Veterans Administration Medical Center

**Daniel Deykin, MD**, Veterans Administration Cooperative Studies Program

### *Remarks by family and friends*

**Henry Buchwald, MD, PhD**, University of Minnesota

**Paul Meier, PhD**, Columbia University

**Kay Dickersin, PhD**, University of Maryland School of Medicine

### *Remarks by family and friends*

**Henry Sacks, MD, PhD**, Thomas C. Chalmers Clinical Trial Unit,  
Mt. Sinai Medical Center

**Frederick Mosteller, PhD**, Harvard University

**Bruce Kupelnick**, MetaWorks, Inc.

**Paula Rochon, MD**, Baycrest Centre for Geriatric Care

**Susan Ross, MD**, MetaWorks, Inc

### *Remarks by family and friends*

### *Closing Remarks*

**Joseph Lau, MD**, New England Medical Center

*Reception to follow on Sackler 8*